



Connect ERDA as a network drive on Windows

If you are an ERDA user, you can work locally on your computer with your ERDA files by connecting ERDA as a network drive. When you make changes to the files via the network drive, the changes are applied directly to the files in ERDA.

Network drive access uses a secure connection, and the files are available wherever you are, as long as you have internet access. This means that you do *not* need a VPN to work with the files outside UCPH.

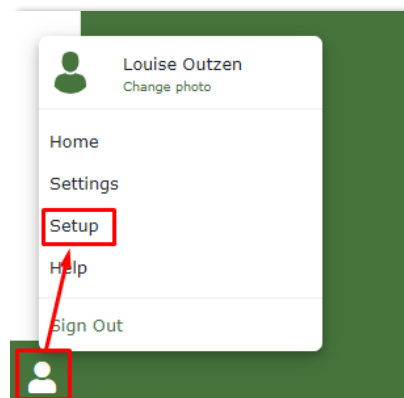
You have two options for connecting ERDA as network drives:

<p>1. <u>WebDAVS</u></p>	<p>WebDAV is an abbreviation for Web-based Distributed Authoring and Versioning. We add an “S” for secure, as it all runs on a secure connection.</p> <ul style="list-style-type: none"> <input checked="" type="checkbox"/> Can be used from Windows, Mac and Linux/UNIX <input checked="" type="checkbox"/> Easy to get started <input checked="" type="checkbox"/> Doesn't require software installation <input checked="" type="checkbox"/> Limit on file size - 50 MB as a starting point <input checked="" type="checkbox"/> Sensitive to network outages <input checked="" type="checkbox"/> WebDAVS is less efficient at transferring many and/or large files.
<p>2. <u>SSHFS with SFTP</u></p>	<p>SSHFS is an abbreviation for Secure Shell File System and is the client that connects an SFTP service as a network drive on your computer. SFTP is an abbreviation for Secure File Transfer Protocol.</p> <ul style="list-style-type: none"> <input checked="" type="checkbox"/> Can be used from Windows, Mac and Linux/UNIX <input checked="" type="checkbox"/> Efficient handling of many/large files <input checked="" type="checkbox"/> Robust regarding network outages <input checked="" type="checkbox"/> Unlimited file size <input checked="" type="checkbox"/> You have to install two small programs – once <p>We recommend SSHFS with SFTP, particularly for users who feel comfortable with the technology and/or work intensively with their data.</p>

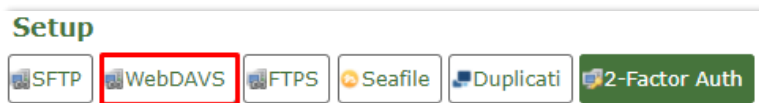
WebDAVS

SETUP WebDAVS

Click on the green avatar icon in the bottom left corner. Click on “Setup”



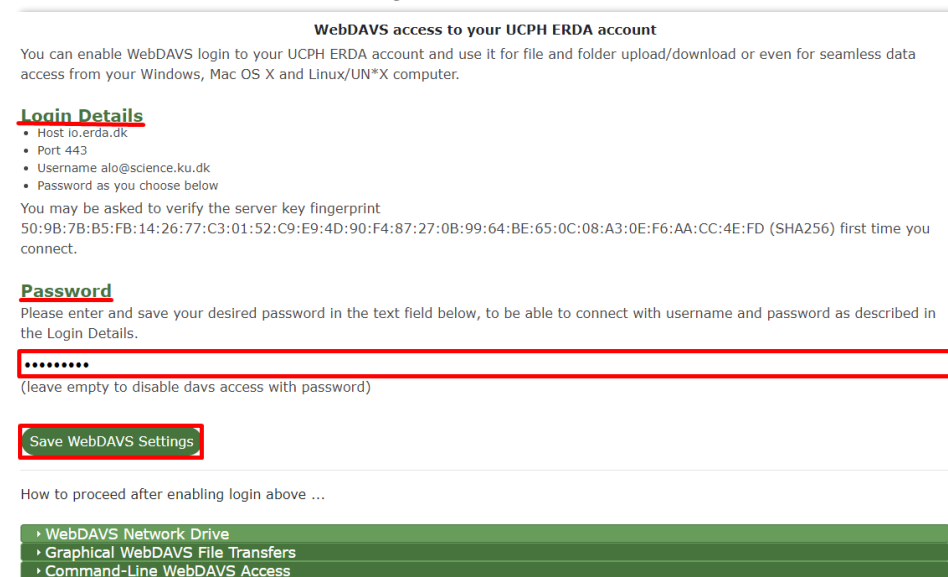
Click on “WebDAVS”



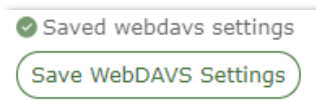
Under “Login Details” in the screenshot below, you’ll see your personal login details, which you’ll need to connect WebDAVS as a network drive on your computer.

Create a new, separate password for your WebDAVS access in the field under “Password”. The password must consist of at least eight characters and must contain a combination of lowercase and uppercase letters, numbers and special characters (at least three of the four types mentioned).

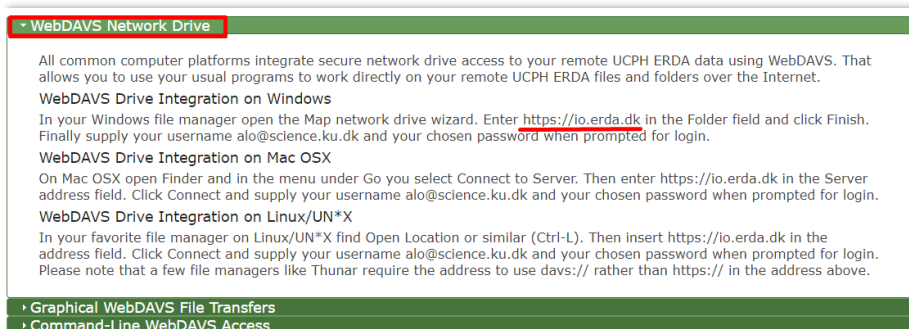
Click “Save WebDAVS Settings”




WebDAVS has now been set up

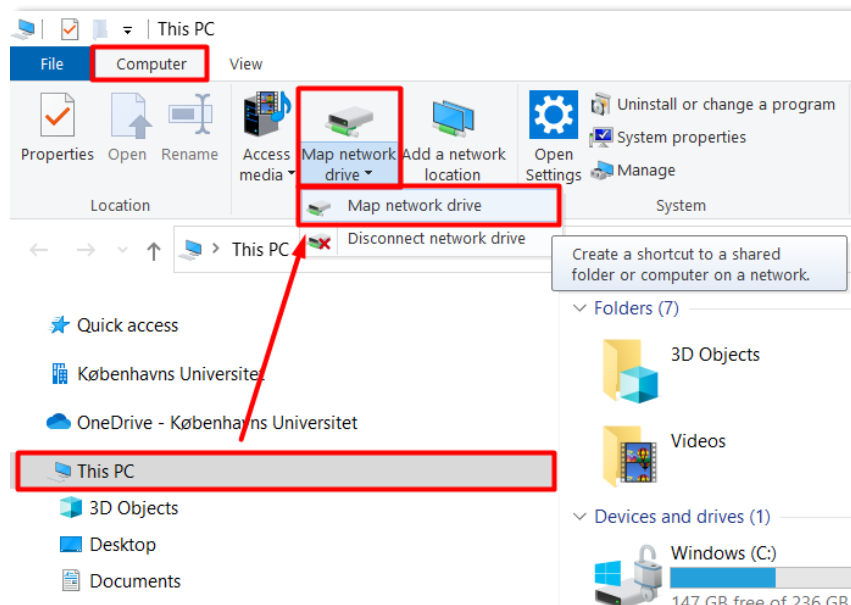


Click the fold-out menu on “WebDAVS Network Drive”. Copy the URL “https://io.erd.dk”. You’ll need to use it shortly.

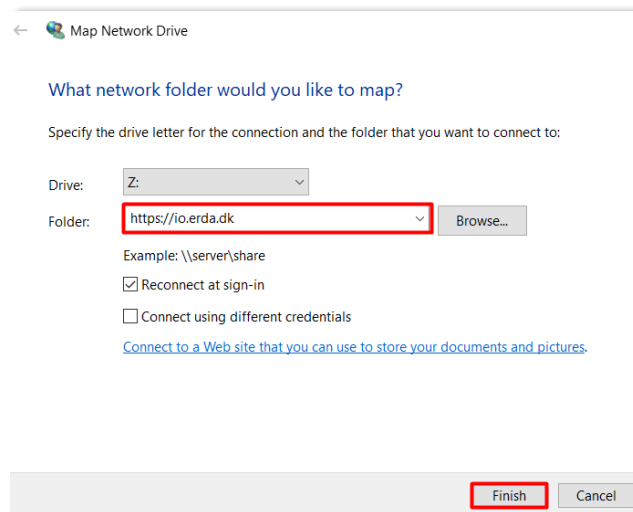


MAP NETWORK DRIVE

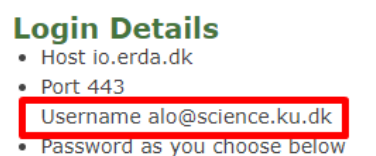
Click on the File Explorer icon on your computer .
Click on "This PC". Click on the "Computer" tab.
Then click "Map network drive" at the top of the screen



Insert the copied URL in the field next to "Folder". Click on "Finish".



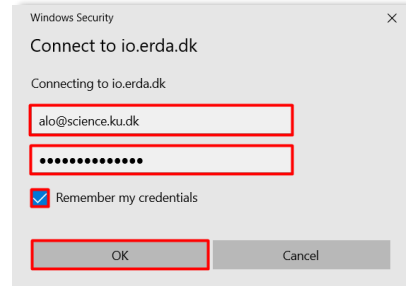
You will now be asked to log in using the username written under "Login Details". In this specific example, it's "alo@science.ku.dk", **but you must use your own.**



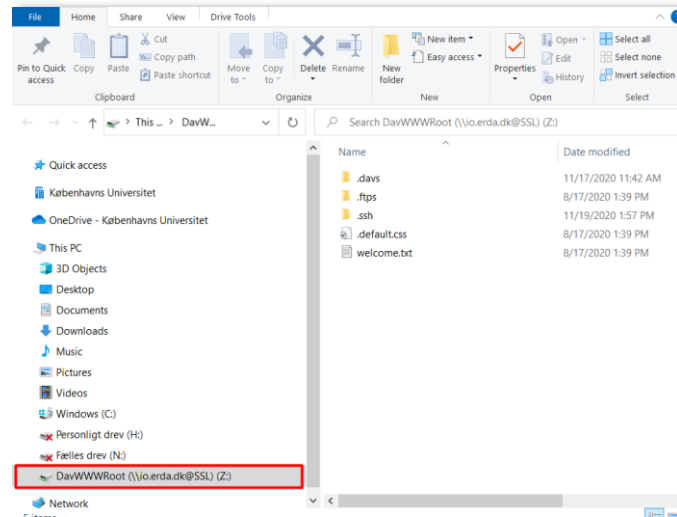
In the login dialogue, shown in the following screenshot, enter your username in the top field, and below it the password you chose for WebDAVS (in other words, it's not automatically the same password that you, as a UCPH or external user, use when you log into ERDA's web pages).

Tick “Remember my credentials” (only do this if you don’t share your computer with others).

Click “OK”

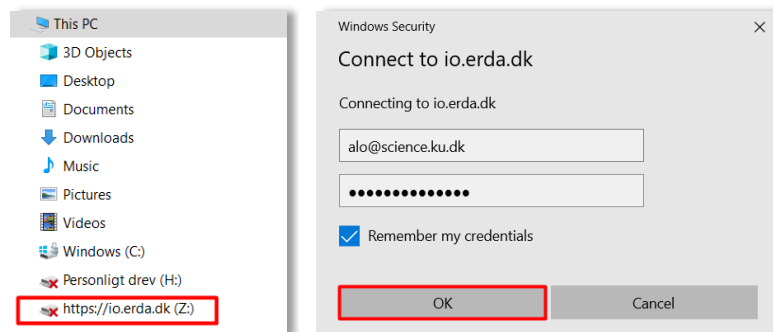


ERDA is connected as a network drive with a chosen drive name (here Z:)



In other words, you have access to all your data in ERDA via your computer’s programs and file management. When you’re online you can work in the files in the same way as with your other local files. When you make changes to the files via the network drive, the changes are applied directly to the files in ERDA.

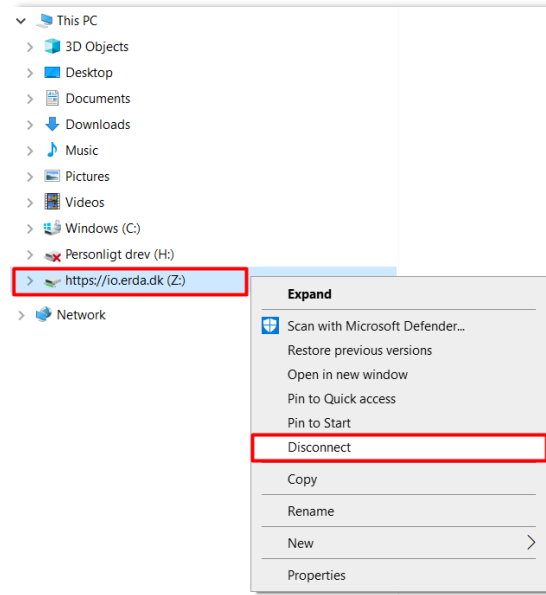
The next time you log into your computer, you just need to click on the network drive and click “OK” in the popup “Connect to io.erda.dk”. That is, if you have previously ticked “Remember my credentials”. If not, you need to enter your username and your own chosen password for your WebDAVS access.



DISCONNECT NETWORK DRIVE

You can disconnect ERDA as a network drive. We recommend this if you share a computer with others.

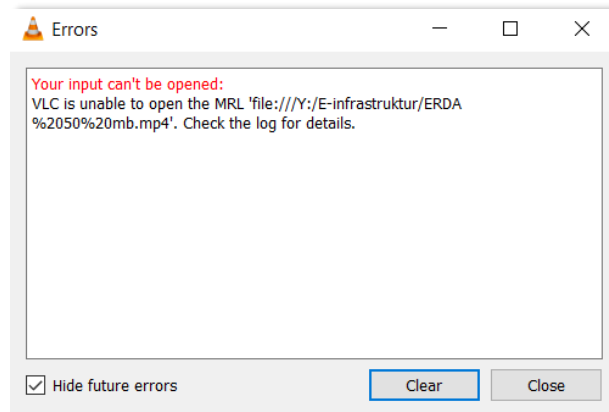
Right-click on the drive (here Z:). Click on “Disconnect”.



FILE SIZE LIMIT OF 50 MB

Microsoft has set a low limit on the size of the files you can download and upload from WebDAVS locations. The limit is around 50 MB.

This means that you will receive an error message if you open a file from the network drive that is 50 MB or more. The error message may for example look like this:

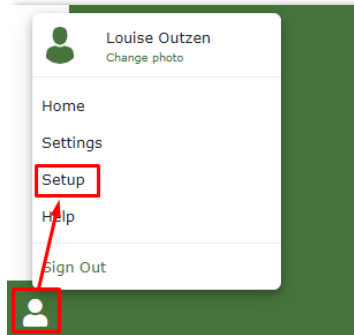


There is a way to raise this limit. It's described in the User Guide on <https://erda.ku.dk/> which is a more comprehensive guide to using ERDA.

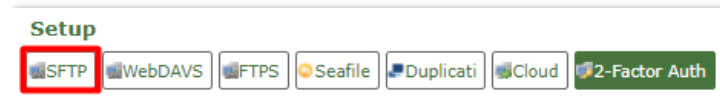
SSHFS WITH SFTP

SET UP SSHFS WITH SFTP

Click on the green avatar icon in the bottom left corner. Click on “Setup”



Click on “SFTP”



Create a new, separate password for your SFTP access in the field under “Password”. The password must consist of at least eight characters and must contain a combination of lowercase and uppercase letters, numbers and special characters (at least three of the four types mentioned).

Click on “Save SFTP Settings”

SFTP access to your UCPH ERDA account

You can enable SFTP login to your UCPH ERDA account and use it for efficient file and folder upload/download or even for seamless data access from your Windows, Mac OS X and Linux/UNIX computer.

Login Details

- Host `io.erd.dk`
- Port `22`
- Username `alo@science.ku.dk`
- Publickey / Password as you choose below

You may be asked to verify the server key fingerprint `09:3a:2e:a1:46:10:38:f0:24:21:38:8a:e6:a4:37:5d` (MD5) or `FBCINwWwLhg8mpS9GA6TRoadJWEvkq7HOBQJRavtx1A` (SHA256) first time you connect.

Public Keys

You can use any existing RSA key, or create a new one. If you signed up with a x509 user certificate, you should also have received such an `id_rsa` key along with your user certificate. In any case you need to save the contents of the corresponding public key (`id_rsa.pub`) in the text area below, to be able to connect with username and key as described in the Login Details.

```
1
2
3
4
5
6
7
8
9
10
11
12
13
```

(leave empty to disable sftp access with public keys)

Password

Please enter and save your desired password in the text field below, to be able to connect with username and password as described in the Login Details.

.....

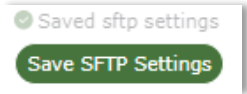
(leave empty to disable sftp access with password)

Save SFTP Settings

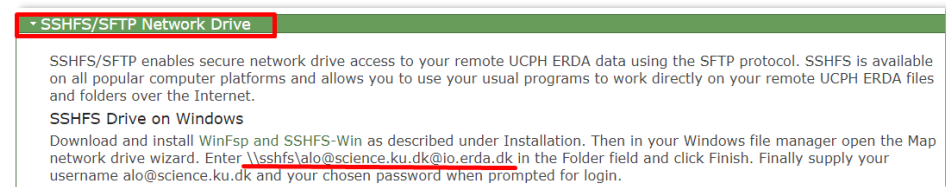
How to proceed after enabling login above ...

- › SSHFS/SFTP Network Drive
- › Graphical SFTP File Transfers
- › Command-Line SFTP Access

SFTP is now configur.



Click on the fold-out menu on “SSHFS/SFTP Network Drive”. Copy the whole path starting with “\\sshfs\....”. You will need it later.



INSTALL TWO PACKAGES

SSHFS is a client that connects an SFTP service as a network drive on your computer.

You can install SSHFS by downloading and running two programs: WinFsp and SSHFS-Win. You can find the programs here: [SSHFS-Win on GitHub](#)

Installation

- Install the latest version of [WinFsp](#).
- Install the latest version of [SSHFS-Win](#). Choose the x64 or x86 installer according to your computer's architecture.

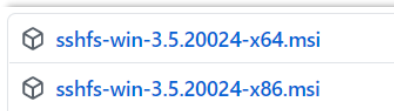
Install both programs:

1) Click on “WinFsp” and follow the installation guide.

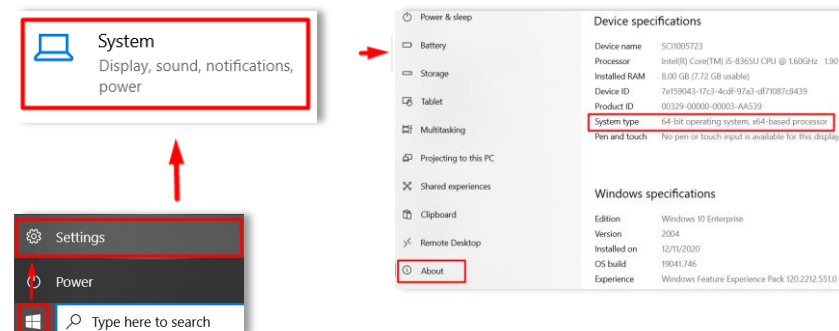


2) Click on “SSHFS-Win” and follow the installation guide.

During the installation, you need to decide whether you want to download x64 (64-bit) or x86 (32-bit). This depends on your computer's operating system.



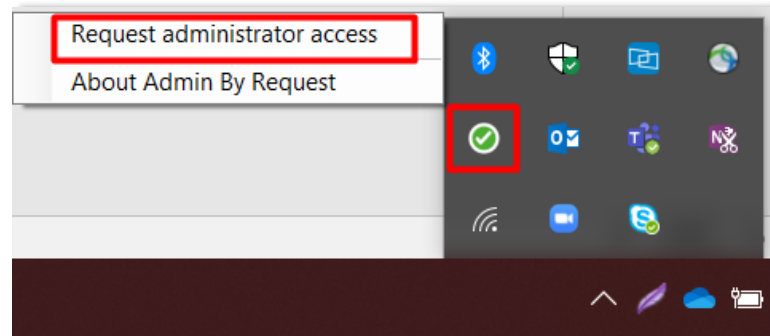
You can find information about your computer's operating system under: Start – Settings – System – About



When you've installed both programs, you can connect a network drive.


TIPS FOR INSTALLATION

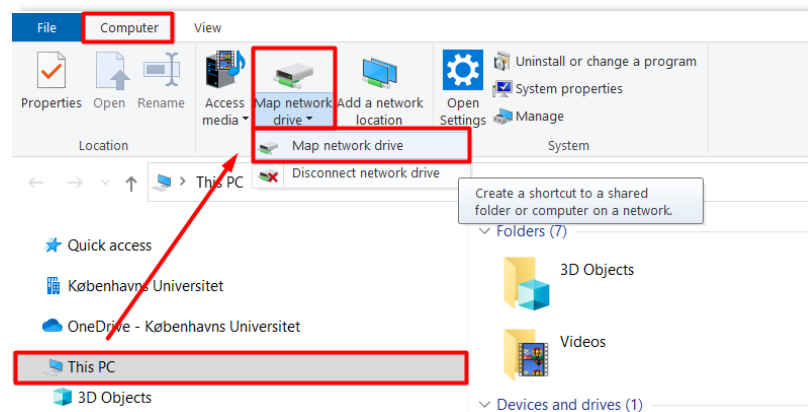
On a standard UCPH computer (B machine), you have access to installing programs by clicking “Request administrator access” in the bottom right corner.



If you have a special, secure UCPH computer (A machine), you need to contact UCPH IT to install the two programs.

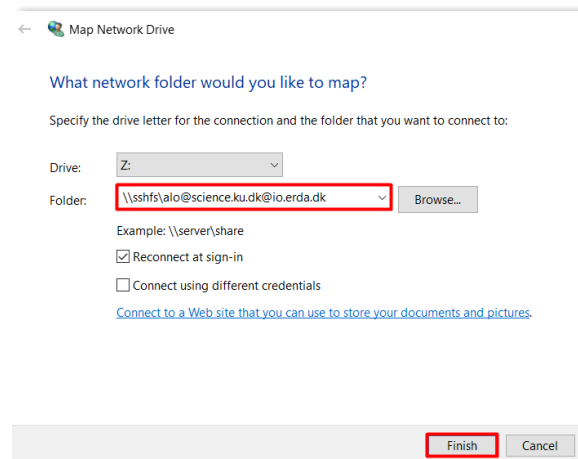
MAP NETWORK DRIVE

Click on the File Explorer icon on your computer . Click on “This PC”. Click on the “Computer” tab. Click on “Map network drive” at the top of the screen.



Next to “Folder”, paste the path you copied earlier. In this specific example, it's “\\sshfs\alo@science.ku.dk@io.erda.dk”, **but you must write your own path.**

Click on “Finish”.



If you've lost your copied path, you can find it under “SSHFS/SFTP Network Drive”.

SSHFS/SFTP Network Drive

SSHFS/SFTP enables secure network drive access to your remote UCPH ERDA data using the SFTP protocol. SSHFS is available on all popular computer platforms and allows you to use your usual programs to work directly on your remote UCPH ERDA files and folders over the Internet.

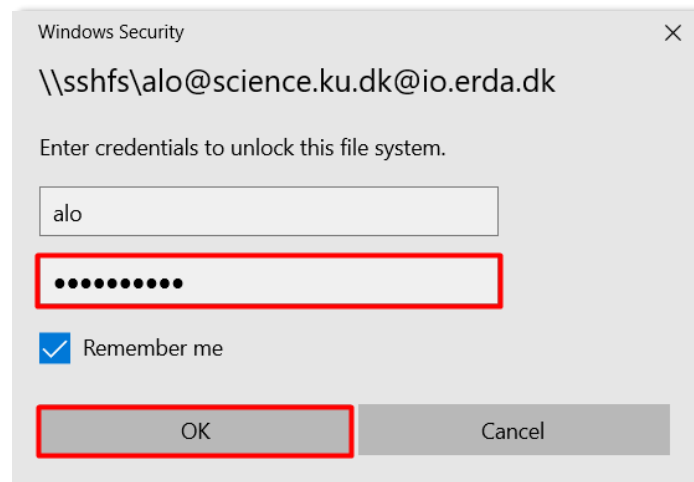
SSHFS Drive on Windows

Download and install WinFsp and SSHFS-Win as described under Installation. Then in your Windows file manager open the Map network drive wizard. Enter `\\sshfs\alo@science.ku.dk@io.erda.dk` in the Folder field and click Finish. Finally supply your username `alo@science.ku.dk` and your chosen password when prompted for login.

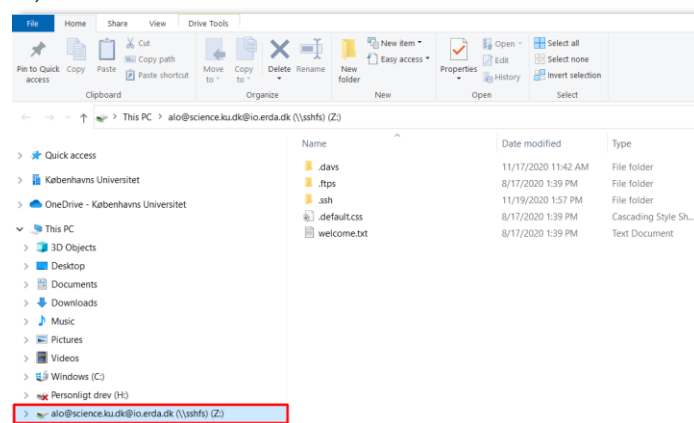
In the bottom field of the login dialogue, shown in the following screenshot, enter the password you chose for your SFTP access (**in other words, it's not automatically the same password that you, as a UCPH or external user, use when you log into ERDA's web pages**).

Tick "Remember me" (only do this if you don't share your computer with others).

Click "OK"



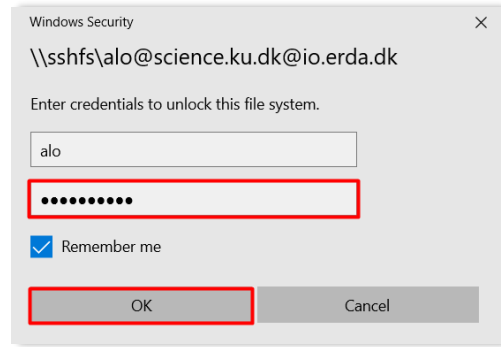
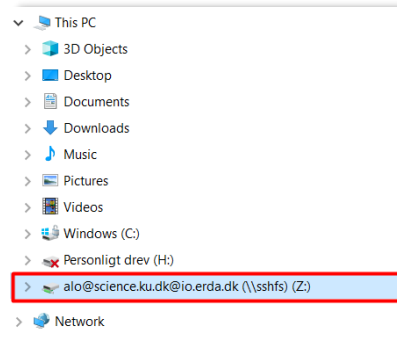
ERDA is connected as a network drive with a chosen drive name (here Z:).



In other words, you have access to all your data in ERDA via your computer's programs and file management. When you're online you can work in the files in the same way as with your other local files. When you make changes to the files via the network drive, the changes are applied directly to the files in ERDA.

The next time you log into your computer, you just need to click on the network drive, then you'll be connected. That is, if you have previously

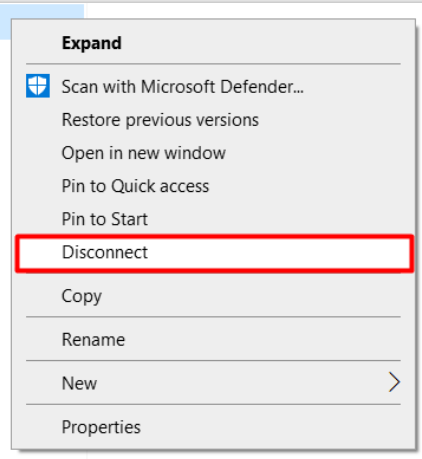
ticked "Remember me". If not, you need to enter your previously chosen password for your SFTP access.



DISCONNECT NETWORK DRIVE

You can disconnect ERDA as a network drive. We recommend this if you share a computer with others.

Right-click on the drive (here Z:). Click on "Disconnect".



HELP

See more at <https://erda.ku.dk/> or for personal help, email support@erda.dk